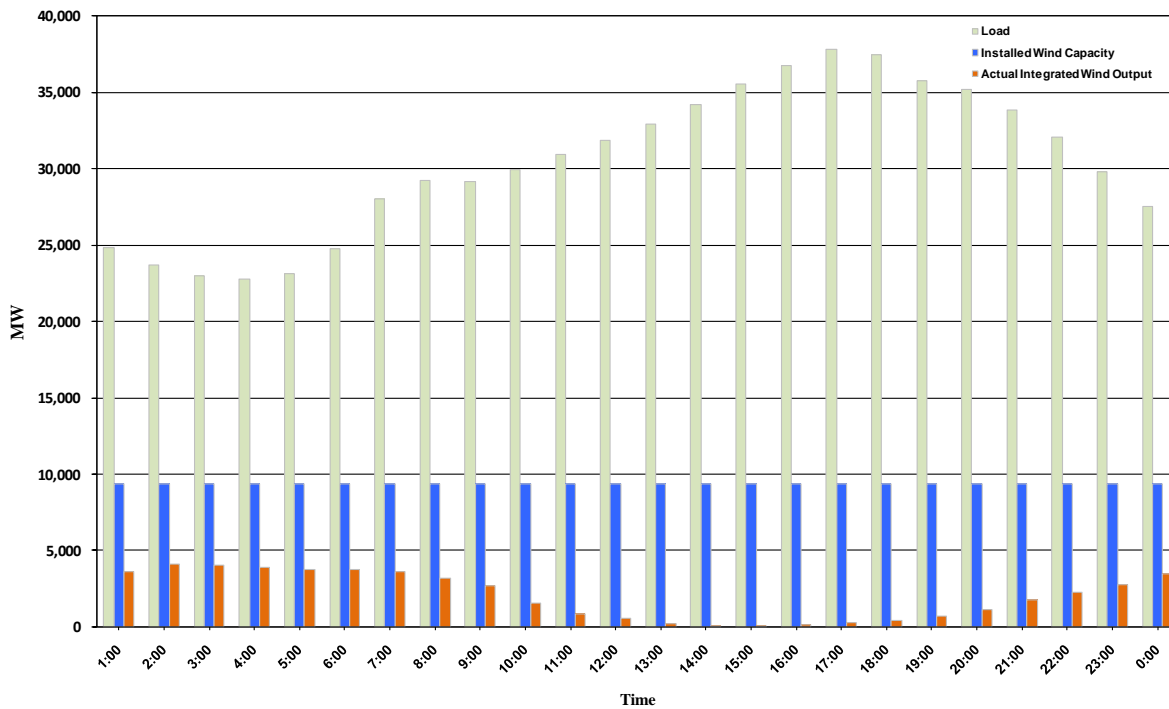




ERCOT Grid Operations Wind Integration Report: 10/15/10

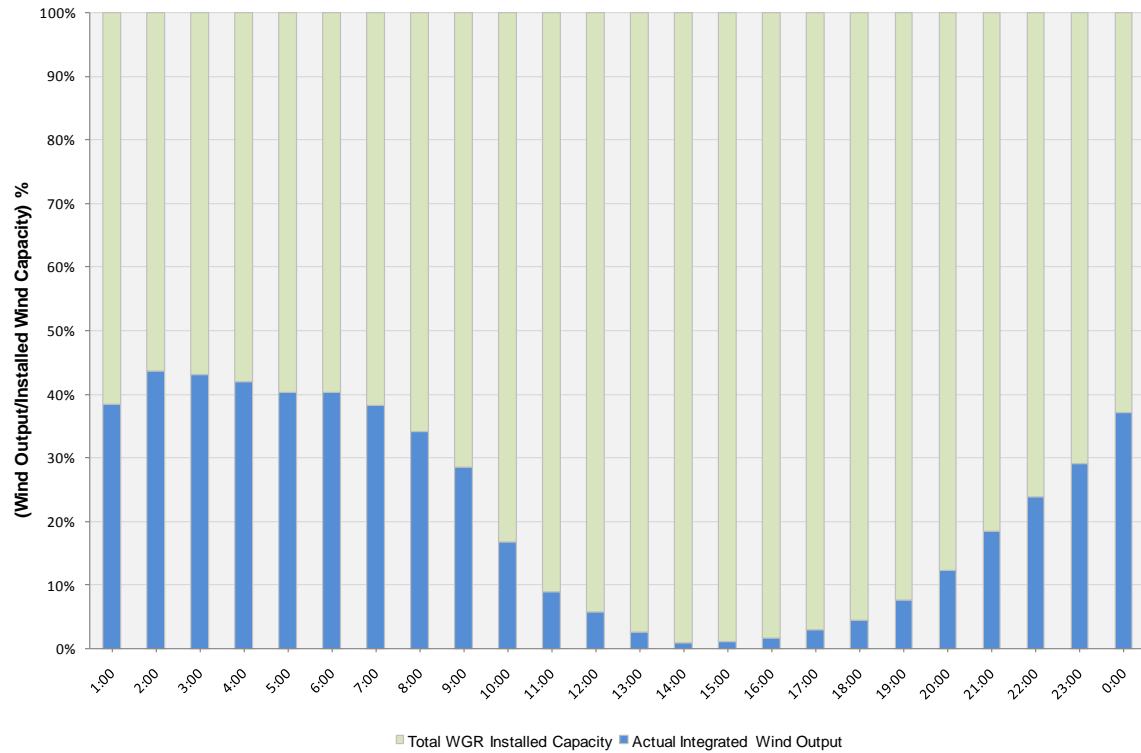
Peak Load	37,784 MW
Load Peak Hour	17
Wind Record 06/12/10	7016 MW
Max Wind value	4172 MW
Wind Peak Hour	01:18:24
Wind Integration %	17.50

Hourly Average Actual Load vs. Actual Wind Output
10-15-2010

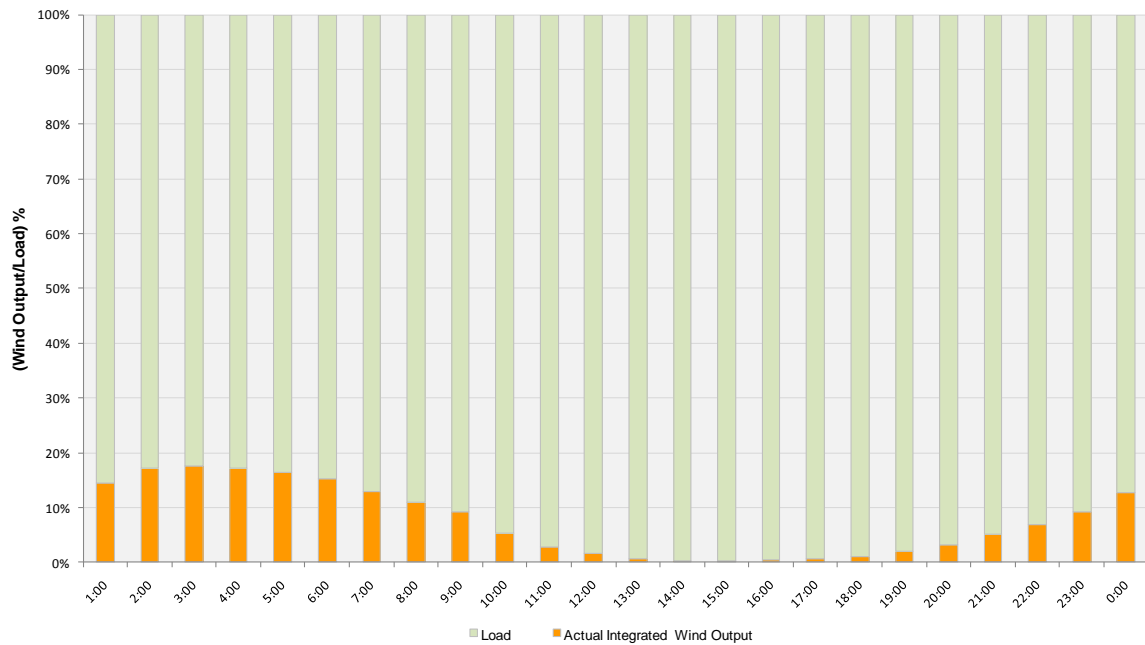




Actual Wind Output as a Percentage of the Total Installed Wind Capacity
10-15-2010



Actual Wind Output as a Percentage of the ERCOT Load
10-15-2010





ERCOT Load vs. Actual Wind Output 10/08/10 - 10/15/10

